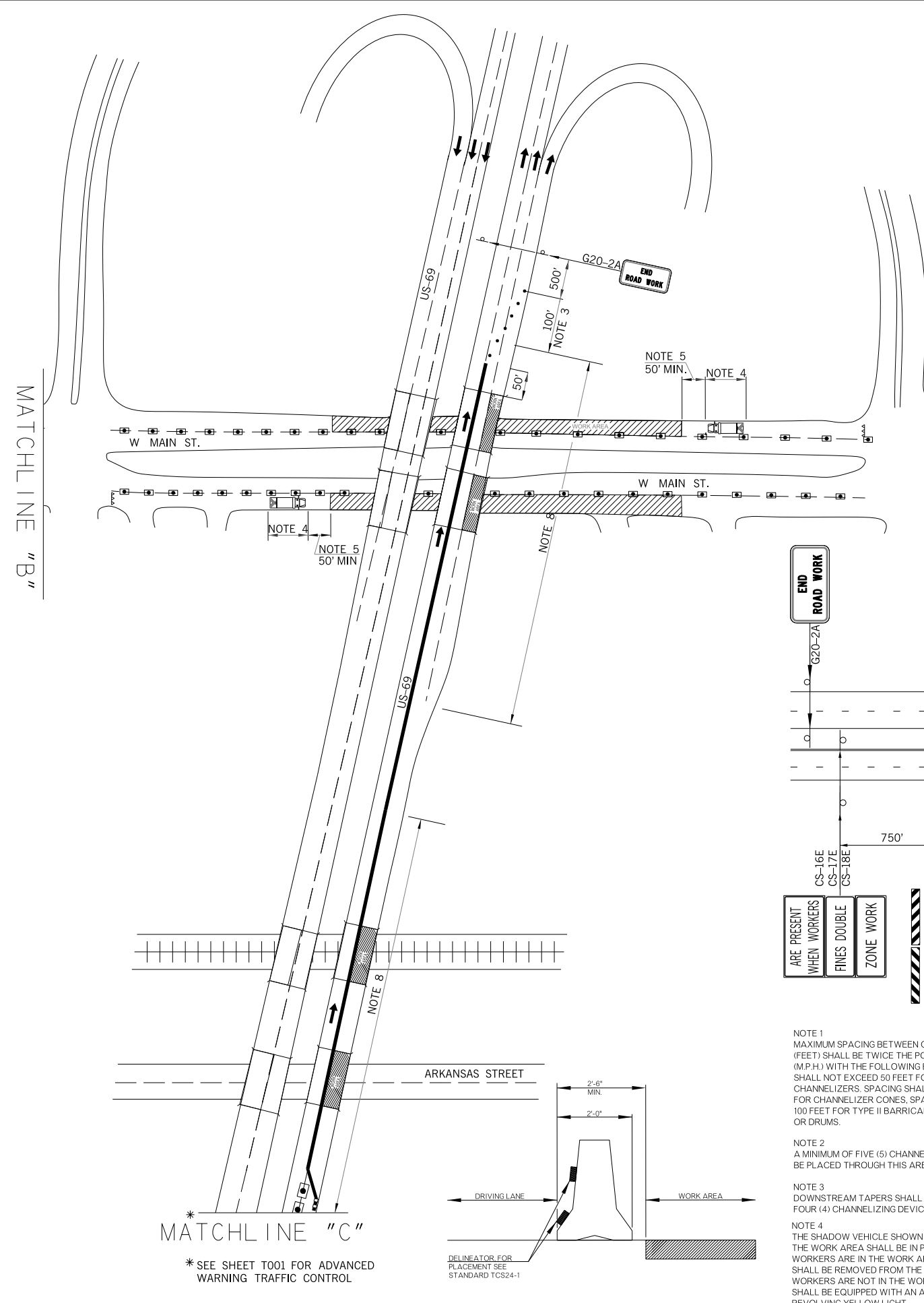


REVISIONS		
REV. NO.	DESCRIPTION	DATE

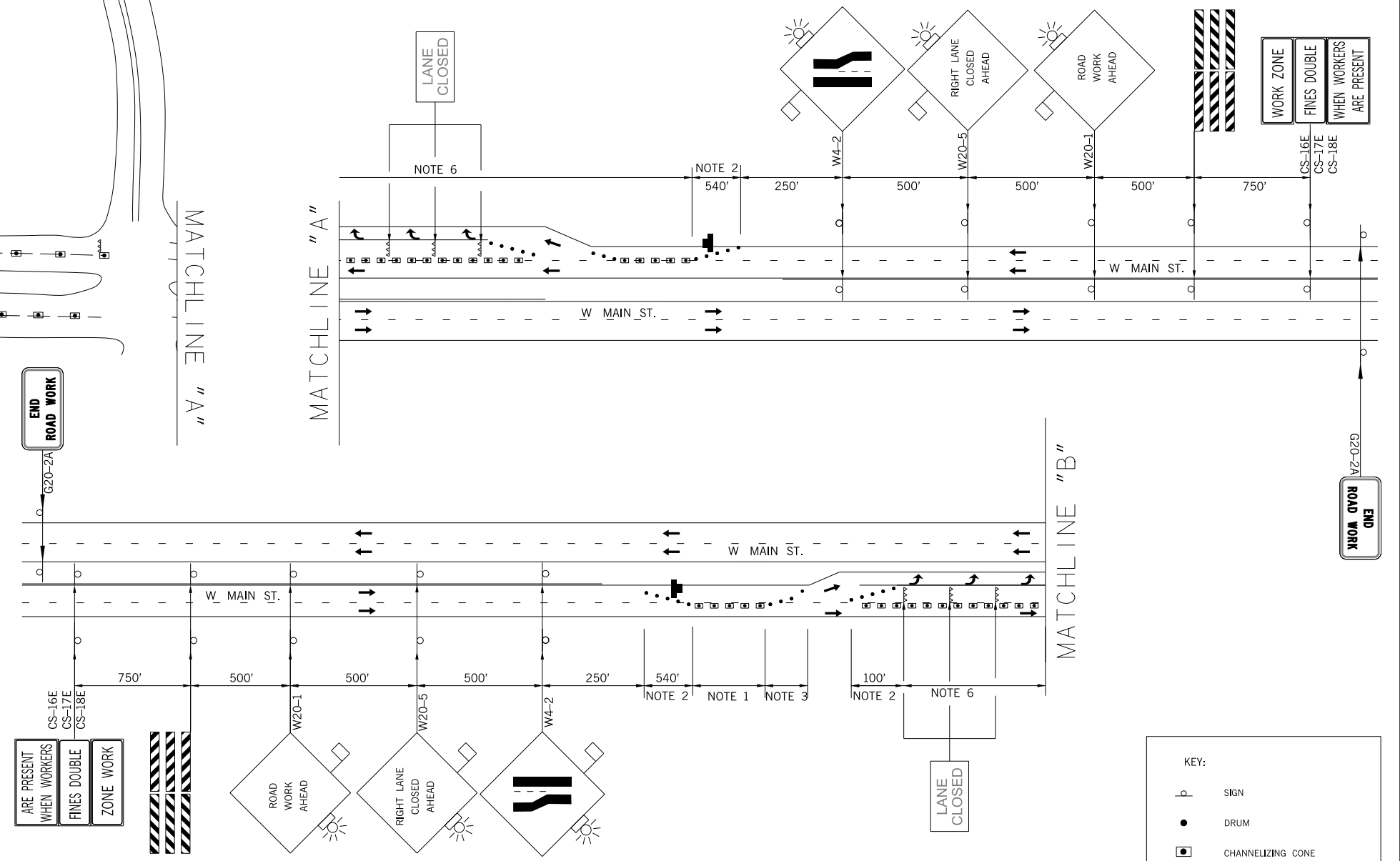
THERE IS NO SUGGESTED SEQUENCE OF CONSTRUCTION IN THIS DRAWING. INSIDE AND OUTSIDE LANES SHALL BE WORKED AS STATED IN THE PLANS OR AS DIRECTED BY THE ENGINEER. THE DETAILS SHOWN ARE FOR ONE LANE OF TRAFFIC CONTROL. ALL TRAFFIC CONTROL FOR THE ALTERNATE LANE WILL BE OPPOSITE OF THAT SHOWN.



MATCHLINE "A"

MATCHLINE "A"

MATCHLINE "B"



- NOTE 1**
MAXIMUM SPACING BETWEEN CHANNELIZING DEVICES (FEET) SHALL BE TWICE THE POSTED SPEED LIMIT (M.P.H.) WITH THE FOLLOWING EXCEPTIONS. SPACING SHALL NOT EXCEED 50 FEET FOR CONES OR TUBE CHANNELIZERS. SPACING SHALL NOT EXCEED 75 FEET FOR CHANNELIZER CONES. SPACING SHALL NOT EXCEED 100 FEET FOR TYPE II BARRICADES, VERTICAL PANELS OR DRUMS.
- NOTE 2**
A MINIMUM OF FIVE (5) CHANNELIZING DEVICES SHALL BE PLACED THROUGH THIS AREA.
- NOTE 3**
DOWNSTREAM TAPERS SHALL CONTAIN A MINIMUM OF FOUR (4) CHANNELIZING DEVICES.
- NOTE 4**
THE SHADOW VEHICLE SHOWN AT THE BEGINNING OF THE WORK AREA SHALL BE IN PLACE WHENEVER WORKERS ARE IN THE WORK AREA. THIS VEHICLE SHALL BE REMOVED FROM THE ROADWAY WHENEVER WORKERS ARE NOT IN THE WORK AREA. THIS VEHICLE SHALL BE EQUIPPED WITH AN ACTUATED FLASHING OR REVOLVING YELLOW LIGHT.

- NOTE 5**
A LONGITUDINAL BUFFER AREA, TO ALLOW WORKERS TIME TO EVACUATE THE WORK AREA, SHOULD BE PROVIDED. FOR GUIDELINES ON SETTING THE LENGTH OF THIS BUFFER, SEE STANDARD DRAWING TCS2-1 (LATEST REVISION). ACTUAL LENGTH SHALL BE DETERMINED BY FIELD CONDITIONS AND THE JUDGEMENT OF THE ENGINEER.
- NOTE 6**
TYPE III BARRICADES WITH SIGNS READING "LANE CLOSED" (R11-2) SHALL BE PLACED EVERY 2,000 FEET THROUGH ACTIVITY AREA. THESE TYPE III BARRICADES AND SIGNS MAY BE OMITTED ON MOVING OPERATIONS AND SHORT DURATION PROJECTS.
- NOTE 7**
MAXIMUM SPACING BETWEEN CHANNELIZING DEVICES (FEET) SHALL BE EQUAL TO THE POSTED SPEED LIMIT (M.P.H.) WITH THE FOLLOWING EXCEPTIONS. SPACING SHALL NOT EXCEED 25 FEET FOR CONES OR TUBE CHANNELIZERS. SPACING SHALL NOT EXCEED 50 FEET FOR TYPE II BARRICADES, VERTICAL PANELS OR DRUMS.

NOTE 8

FLARE RATES FOR CONCRETE MEDIAN BARRIER IN TEMPORARY TRAFFIC CONTROL ZONES

SPEED	FLARE RATE (MINIMUM)
40 M.P.H.	9 TO 1
45 M.P.H.	10 TO 1
50 M.P.H.	11 TO 1
55 M.P.H.	12 TO 1
60 M.P.H.	13 TO 1
65 M.P.H.	14 TO 1
70 M.P.H.	15 TO 1
75 M.P.H.	16 TO 1

POSTED SPEED LIMIT PRIOR TO CONSTRUCTION

KEY:

	SIGN
	DRUM
	CHANNELIZING CONE
	WORK AREA
	ARROW DISPLAY
	C.Z. IMPACT ATTENUATOR
	PORT. BARRIER WALL
	TYPE III BARRICADES

MATCHLINE "C"

* SEE SHEET T001 FOR ADVANCED WARNING TRAFFIC CONTROL

DELIMITER FOR PLACEMENT SEE STANDARD TCS24-1

NOT TO SCALE

TRAFFIC CONTROL DETAIL
(BRIDGE A,B,C & D)

Drawn	SC	6/16
Design	SC	6/16
Checked	KCD	6/16

TRAFFIC ENGINEERING
TAREK MAAROUF

STATE OF OKLAHOMA	DEPARTMENT OF TRANSPORTATION
DIVISION 2	JOB/PROJECT NO. 24333(08)
	SHEET NO. T002

MULTIPLE COUNTY / 0